

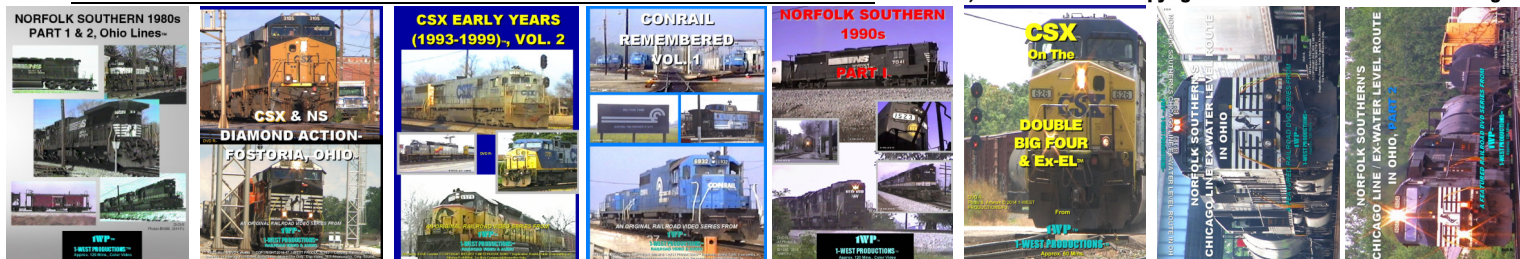
# 1WP™ 1-WEST PRODUCTIONS™ RAILROAD VIDEO & AUDIO CATALOG/LIST

9/2023

**2023 Season Still the same prices since 2014!**

Webstore: [WWW.1WESTPRODUCTIONS.COM](http://WWW.1WESTPRODUCTIONS.COM) / Email: [1westproductions@gmail.com](mailto:1westproductions@gmail.com) /PO Box 355, Clyde, OH 43410 /Phone # on order

form. •DVD SERIES PRODUCED & FEATURED BY 1-WEST PRODUCTIONS™: All Videos, Cds & Content ©Copyright 2020 1-West Productions™ Page 1



**\*\* ALL VIDEO DVDs are \$20 EA. / 2 for \$35 / 3 for \$53 / or 4 for \$70, Approx. 120 Mins. (unless otherwise noted) \*\***

**VINTAGE VIDEO SECTION:** (Color, orig. sound, video tape to SD digital vid. DVD, 4x3 anamorphic, edited, some narr/, captions, menus, previews, capts.)

**-ALL CONRAIL-AT HORSESHOE CURVE & ALTOONA, PA & EC INDIANA (1993):** (New 8/2019), remastered from our #29 Keith's Trains™ video, with CR & Amtrak action in these PA hotspots & Winchester & Muncie IN, various freights, switching, CR cab, UP units, filmed by K. Lehman, 105 mins.

**-BEREA, OH INTERLOCKING WITH CONRAIL & AMTRAK, 1996 (8/2018):** See CR in action at Berea Tower, with CR's Chicago, Indianapolis, & Short Line action, fallen flag equip., older EMDs & GE's, AMT train, & more. (Remastered from our Keith's Trains #50). Video K. Lehman. Aprx. 105 mins.

**-BNSF (WITH AMTRAK) AT GALESBURG, IL, 1998, VOL. 1: (4/20) Remastered Keith's Trains #64, BNSF & AMT on ex-CB&Q & ATSF Lines**

**CONRAIL REMEMBERED, VOL. 1:** CR from the 1980s-1990s, many freights in IN areas & a scene in OH, older loco types, cabs, run-thru power, locals, Avon Yd., & more (from Keith's Trains Series™ #1-#4, video K. Lehman & R. Jordan). Approx. 120 mins, caps., edited, all color, orig. sound, pt. narration.

**CONRAIL REMEMBERED, VOL. 2:** Cont. of CR from the '80s-'90s. See freights in EC IN areas, older loco types, cabs, run-thru power, locals, switching, rail train, Muncie Depot, & more (from Keith's trains Series™ #4-#8, video K. Lehman). Approx. 120 mins, caps., edited, all color, orig. sound, pt. narration.

**CONRAIL REMEMBERED, VOL. 3 (2018):** More CR from the '90s, freights EC IN areas, older loco types, cabooses, run-thru power, locals, switching, & more. Muncie, Winchester, Cowan, Farmland, Richmond, Union City, IN, etc. (from Keith's Trains Series™ #8-#11, video K. Lehman). Approx. 120 mins,

**CONRAIL REMEMBERED VOL. 4:** (1/19) Vintg. CR '91 & '92, fallen flag rd.names, older equip.,UP, SP, KCS units, EC IN (from Keith's Trains Series™ #12-#14 & #16, video from K.Lehman)120 mins.

**CONRAIL REMEMBERED VOL. 5:** (3/19) More vintage CR in 1992, CR cabooses, locals, run-thrus, fallen flag rd.names, older & newer wide cab equip.,UP units, EC IN of Muncie, Winchester, & Parker City (from Keith's Trains Series #16-#18 Videos). (K.Lehman)120 mins.

**CONRAIL REMEMBERED™ VOL. 6 (5/2019) Vintage CR in 1992-93, Winchester & Muncie, IN, PC, EL, RDG cars, many freight, old & new CR units, Amtrak P30s, UP power, etc. (remastered & from our Keith's Trains™ #19-22, video Keith Lehman, approx.120 mins.)**

**CONRAIL REMEMBERED™ VOL. 7 (3/2020) CR in 1992-93, Winchester, Parker City, & Muncie, IN, EL & PC cars, old & new CR, SP, & UP power, local, hi-wides, etc. (remastered & from our Keith's Trains™ #s 21, 23, 24, & 25, video Keith Lehman, approx.120 mins.)**

**-CSX EARLY YEARS (1988-'93), VOL. 1:**Early CSX action & colors, IN & OH (vid. K. Lehman) Aprx.120 mins.(from Keith's Trains #s 1-5,7,9,10,14-16, 21).

**-CSX EARLY YEARS (1993-1999), VOL. 2:** More early CSX & colors, locos, etc. in IN & OH, w/ IN C&O Chicago line before/after CSX pulled part of the line. (video K. Lehman) Approx. 120 mins. (scenes used from KT's #s 21, 24-26, 31, 32, 39, 74, & HOTSPOTS, BUTLER, IN, E. LANSING & DURAND, MI (1995)™ WITH CN/GTW, CP/SOO, CSX, CR, AMTRAK/VIA, CMR video).

**-DESHLER, OHIO DIAMOND ACTION WITH CSX (2000), VOL. 1:**(7/2019); Garrett, Willard, Toledo Sub. Action with CSX, ATSF, Lease-FURX, etc., CR, CNW, SOO, UP, BNSF units, many freights, locals, & more. (Remastered from our Keith's Trains Series #77), filography Keith Lehman.

**-FOSTORIA, OH CSX & NS JUNCTION ACTION (1996), VOL. 1:**(2/2019)Early Fostoria CSX & NS, F Tower, Remastered from #49), approx.115 mins.

**-MIXED STEAM ACTION WITH NKP 587 & 765, N&W J-611, & SOU 4501, VOL. 1:** (2/2020): steam only-(1988-1993) in IN towns Muncie, Richmond, Millville, New Castle, Noell, Hagerstown, Parker City, Argos, Springport, NS GP38s, scenes used from Keith's Trains Series #s 2,4,5,12,14,19, & 28.

**-NORFOLK SOUTHERN 1980s PART 1 & 2 OH Lines:** The 1st in this Series with Part 1, showing the early years of NS, with fallen flag freight equipment, N&W and SOU locos, etc. Then follow to Part 2 included & see more early NS, cabooses are on their way out, but still a few seen on trains, & more. 1986.

**-NORFOLK SOUTHERN 1980s PART 3 & 4, OH Lines:** See in Pt. 3 more of the early NS, filmed in the Bellevue, OH area. Older NS N&W, & SOU locos, mix of freight train types, from coal to mix, etc. Then to Part 4 see still a few cabooses, fallen flag freight cars, SD9 switch action, & more. 1986.

**-NORFOLK SOUTHERN 1980s PART 5 & 6, OH Lines:** Pt. 5 see standard cab locos, freight cars before NS & CSX markings, caboose deadline, & more. Pt. 6 has more similar & great material, SD9 switching, a priv. NW caboose saved from the deadline, & more freight action around Bellevue, OH, & more. 1986.

**-NORFOLK SOUTHERN 1980s PART 7 & 8, OH Lines:** See a locomotive & caboose deadline in the old East Yards, & facilities that have changed since then. Also more vintage 80s freights, early NS locomotives, N&W 1218 & NKP 765 steam action, & more, 1987.

**-NORFOLK SOUTHERN 1980s PART 9 & 10, OH Lines:** Excursions- NKP 765 steam & NS TC10, NS freights, N&W & SOU units, fallen flag cars, vintage.

**-NORFOLK SOUTHERN 1980s PART 11 & 12, OH Lines:** See more of NS in the late 80s, with N&W, NS, SOU standard cab units, NKP 765 & N&W 1218 steam, cabooses, fallen flag freight cars, NJII NW2 switching, & more near the Bellevue area.

**-NORFOLK SOUTHERN 1980s PART 13 & 14, OH Lines:** Closing of the 80s era, with more various NS freight action, std. cab NS, N&W, & SOU units, N&W cabooses, Guilford power, a CR scene, N&W 1218, NKP 765 & N&W J611 steam, & more. Near Bellevue & Clyde areas. 1988, 1989.

**-NORFOLK SOUTHERN 1980s PART 15 & 16, OH Lines:** Conclusion of our NS 1980s Series, filmed in OH. See N&W J611 pass. & coal action, NS freights with N&W, SOU, CNW units, N&W cabs., new Triple Crowns, & more. 1989. *Proceed to our NS 1990s Series coming soon.*

**-NORFOLK SOUTHERN 1990s, PART 1:** Start of NS into the 90s era- stand. cab N&W, SOU, NS units, fallen flag equip., loco deadline, N&W 1218 steam, a lot of great action. Bellevue, Clyde, Fremont, Ohio areas, 1990, approx.120 mins., all color, orig. sound, part narration.

**-NORFOLK SOUTHERN 1990s, PART 2:**1990-94, vintage NS, fallen flag equip.,N&W 1218 & 611 steam, W&LE, Bellevue, OH approx. 74 mins., color, orig.

**-NORFOLK SOUTHERN EARLY YEARS (1988-89), VOL. 1:** (2/2019) Early NS w/ cabs, N&W & SOU units, Muncie, Noell, Mt.Summit, & Richmond, IN, & N.Fairfield & Hamilton, OH (video K. Lehman) approx. 105 mins. (NS used from Keith's Trains Series #s 1-6)

**-RAILROAD HOTSPOTS, BUTLER, IN, E. LANSING & DURAND, MI (1995)™ WITH CN/GTW, CP/SOO, CSX, CR, AMTRAK/VIA, CMR:** (4/2019) Many vintage freights at these hotspots, remastered from our Keith's Trains Series #39 (Video Keith Lehman) (CSX scenes also used on CSX Early Yrs.Vol. 2)

**-NEW- RJ CORMAN RAILROAD (WITH NS)- ST. MARY'S & MINSTER, OH LINES, 1990s:** (New 7/2021) (Video by Ron Kuhn) See early years of RJC on their RJCW St. Mary's Main Line & Minster (WORA) Branch, with line extension, freights, Old KY Dinner Train, & more. Remastered from our Keith's Trains Series #137, & scenes from #s 131, 132, 139, 144, 147, 149-152, 155, 159, 160, & 165.

**-UP & BNSF AT ROCHELLE, IL, 2004, VOL.1:** (NEW 1/2021) Hotspot UP & BNSF action, older & newer locos, remastered from #85, Keith Lehman)

**-NEW-VAR. RAILROADS OF THE MIDWEST(OH, IN, IL), VOL.13 (AMTRAK, SOO, ATSF, SP, GT, CR, IAIS, METRA, CSX, & NS, Mid-'90s-Early 2000s):** (NEW 4/2021): See these RRs & action at Joliet & Danville, IL, Quincy, Wapakoneta, Lima, Sidney, Ft. Shawnee, & Leipsic, OH, & Warsaw & Porter, IN. (Remastered from our Keith's trains Series #157 video.) Video by Ron Kuhn. Approx. 120 Mins.

**-WINTON PLACE ACTION WITH NS, CSX, CR, & I&O (1998):** (New 9/2017) See these roads in action near Cincinnati's hot spot with a lot of freights, power, & more. (Remastered from our Keith's Trains #67). Video by K. Lehman. Approx. 1 hr 30 mins.

**MODERN VIDEO SECTION:** [All are color, orig. stereo sound, SD Dig. Vid. DVD, 16x8 anamorph. (fills 4x3 screen), edited, captions, menus, previews:]

**-CSX & NS DIAMOND ACTION-FOSTORIA, OHIO:** (NEW 7/2017) See CSX & NS modern action around the Fostoria Iron Triangle, where 2 CSX & 1 NS lines cross, & NS Blair Yd. & CSX Fost. Yd. Busy & well-known area with various types of locos, freights, F-Tower & more (filmed 2015-17).

**-CSX & NS DIAMOND ACTION-FOSTORIA, OHIO PART 2:** (NEW 8/2018) See more CSX & NS modern action around the Fostoria Iron Triangle, CSX ex-C&O Yd. with cabooses, lots of mix, oil, auto rack, MofW freights, run-through power, & more. (Filmed 8/2018).

**-CSX ON THE DOUBLE BIG 4 & Ex-EL (105 mins.):** CSX freights (& NS) on ex-Big 4 & ex-EL Lines Galion & Marion, OH in 2014. Stacks, gons, mix, more.

**-MIXED ACTION W/ CSX & NS- MARION, TOLEDO, & DANBURY, OHIO (2019):** (NEW 10/2019) Plenty modern NS action UP & BNSF power, NS-RDG unit.

**-MODERN ACTION WITH NS (& W&LE), 2020:** (NEW 7/2020) See NS & a shot of W&LE in Bellevue & E. Fremont, OH, many freights, locals, loco move, loco deadline, ROWS, vintage buildings, Bellevue Terminal, part of Moorman Yd., Sandusky & Toledo Districts, & more.

**-MODERN ACTION WITH NS & CSX, 2020, VOL. 2: (NEW 9/2020)** NS & CSX in action at Fostoria, Oil Siding, Maple Grove, Old Fort, Clyde, & Danbury, OH-PC Heritage Unit, CP, CSX Mid Helpers, CSX Caboose, Locals, run-thru's, NOW RR & ex-NYC/PC ROWs, F tower, & more.

**-NORFOLK SOUTHERN'S CHICAGO LINE/EX-WATER LEVEL ROUTE IN OHIO (2014-2015):** We see a lot of great NS action on NS's Chicago Line/ex-NYC/PC/CR Water Level Route in OH. See train types of mix, TOFC, stack, oil, etc., at places such as Gypsum, Sandusky, Vermillion, Toledo, & more.

**-NORFOLK SOUTHERN'S CHICAGO LINE/EX-WATER LEVEL ROUTE IN OHIO, PT. 2 (2015):** Continue with Pt. 2 with more modern freight action of NS on their busy Dearborn Div./Chicago Line. See NS, BNSF, CP, CN, UP run-thru power, various freight types, & more.

**-NORFOLK SOUTHERN'S CHICAGO LINE/EX-WATER LEVEL ROUTE IN OHIO, PT. 3 (2015):** (NEW 9/2017) See more modern material of NS on 1 of their busiest lines. See UP, ICE, BNSF, NS locos, NS Exec Train, Heritage Units, many types of freights, & more.

**-NORFOLK SOUTHERN'S CHICAGO LINE/EX-WATER LEVEL ROUTE IN OHIO, PT. 4 (2015):** (NEW 11/2017) Continue with modern NS action, with run-through power, newer & rebuilt locos, many freights, & more on one of NS's busiest lines.

**-NORFOLK SOUTHERN BELLEVUE, OHIO TERMINAL ACTION (2014-2018):** (9/2018): A lot of action at NS's busy terminal, near ex-PRR/N&W Tower, also W&LE. See mid-train helpers, mix, oil, coal, auto rack, & stack trains, locals, on NS's Toledo, Sandusky, & Fostoria Districts. (Filmed 2014-18).

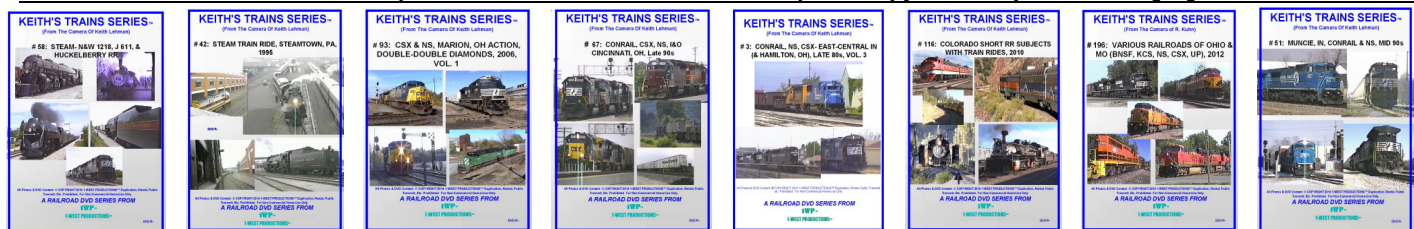
**-NORFOLK SOUTHERN BELLEVUE, OHIO TERMINAL ACTION (2018) PART 2:** (NEW 10/2018): More of NS's busy terminal, near ex-PRR/N&W Tower, mix, oil, coal, auto rack, M of W, & more from NS Toledo, Sandusky, & Fostoria Districts. (Filmed 8, 9/2018).

**-NEW-NORFOLK SOUTHERN BELLEVUE, OHIO TERMINAL ACTION (2021) PART 3:** (NEW 7/2021): See NS at work from 2021, at their Bellevue Terminal/Mini Plant area, including S. of Flat Rock, OH, with NS wide & standard cabs, CN, & Progressive units, run-thrus, arrivals, departures, & a local.

**-NORTH CENTRAL OHIO ACTION- WITH NORFOLK SOUTHERN (BELLEVUE & DANBURY)** (New 8/2019): See modern NS freight action at Bellevue & Danbury, OH, run-through units, many freight types, & more (filmed 2018, 2019).

**-NEW!-NORTH CENTRAL OHIO ACTION- WITH CSX & NORFOLK SOUTHERN, PART 2 (2021):** (New 3/2022): NS & CSX action at NC OH towns of Bellevue & Fostoria with locals, mixed, hopper, coal, various types of units, CSX Hi-Railer, CSX caboose, & more (Filmed 6/2021)

**•KEITH'S TRAINS SERIES™ DVDs(from the camera of Keith Lehman) owned, produced, carried only by 1-WEST PRODUCTIONS™:**



**VINTAGE & MODERN MATERIAL (per date):** [Following DVD Series approx. 120 mins, ea., color, orig. sound, VHS to SD DVD, 4x3 format, unedited unless noted.

Note: The original video tape content was made from video equip. manufactured at that time, & was considered high quality during that era, unlike today's video standards, so picture quality may vary. Some unedited videos may have some focusing issues, filmography errors, color issues, dark night scenes, interruptions, unsteady picture, etc. at times.)

(S=Steam, C=Cab ride included), © Copyright 2014-2022 1-West Productions™/PJ. All DVDs are \$20 EA / 2 for \$35 / 3 for \$45 / 4 for \$70.]

(Remastered versions as marked include captions, DVD menus, scene transitions, edited, more video info., updated labels & covers, etc.)

**#1 CONRAIL, NS, CSX EAST CENTRAL IN (& HAMILTON, OH)- LATE 80s VOL. 1:** Ex-C&O, PRR, NYC depots, ex-C&O yards, NS switch, Triple Crowns, & other freights, in Muncie & Richmond, IN & Hamilton, OH, 7/88 & 3/89, approx. 114 mins. (Remastered) (CR scenes used on CR Remembered Vol. 1; CSX used on CSX Early Yrs. Vol. 1; NS used on NS Early Yrs. Vol. 1.)

**S#2 CONRAIL, NS, CSX EAST CENTRAL IN (& HAMILTON, OH)- LATE 80s (With N&W 611 Steam) VOL. 2:** More CR, NS, & CSX, & N&W J 611 steam, ex-PRR Geneva-Berne, IN bridge, depots, etc.- Portland, Ridgeville, Richmond, IN & Hamilton, OH, 10/88 & 3/89, approx. 110 mins. (Remastered). (CR scenes also used on CR Remembered Vol. 1; CSX used on CSX Early Yrs. V. 1; NS used on NS Early Yrs. Vol. 1; steam used on Mixed Steam Action V. 1.)

**#3 CONRAIL, NS, CSX EAST CENTRAL IN (& HAMILTON, OH)- LATE 80s VOL. 3:** See these freights in IN towns such as Muncie, Richmond, Union City, Losantville, Winchester, & Pendleton, some ATSF, UP, MP, N&W, & SOU units, cabooses, Triple Crowns, & other freights, 3 & 5/89, 114 mins., (Remastered) (CR scenes also used on CR Remembered Vol. 1; CSX used on CSX Early Yrs. Vol. 1; NS used on NS Early Yrs. Vol. 1.)

**S#4 CONRAIL, NS, CSX EAST CENTRAL IN- (WITH NKP 587 N&W 611 STEAM) LATE 80s VOL. 4:** See steam NKP 587 & N&W 611 double-headed & various freights in cities like Muncie, Richmond, Hartford City, & Indianapolis. See CR Avon Yard, Triple Crowns, 6 & 7/89, approx. 118 mins., (Remastered). (CR also used on CR Remembered Vol. 1 & 2; CSX used on CSX Early Yrs. Vol. 1; NS used on NS Early Yrs. Vol. 1; steam used on Mixed Steam Action V. 1.)

**S#5 CONRAIL, NS, CSX EAST CENTRAL IN- (WITH NKP 587 STEAM) LATE 80s VOL. 5:** See freights, NKP 587 steam, caboose ride on Carthage, Knightstown, & Shirley RR ex-NYC, CSX unloads pipe. Richmond, Muncie, Union City, Portland, IN, & Hamilton, OH, 7 & 12/89, 116 mins., (Remastered). (CR also used on CR Remembered Vol. 2; CSX used on CSX Early Yrs. Vol. 1; NS used on NS Early Years Vol. 1; steam used on Mixed Steam Action Vol. 1.)

**#6 CONRAIL & NS EAST CENTRAL IN LATE 80s- EARLY 1990 VOL. 6:** Late 1989 & into 1990 & see CR & NS freights, snow scenes, in towns as Muncie, Richmond, & Selma, IN. ex-PC/NYC Union Station & demolition of depot, Sperry Rail Car, Triple Crowns, 12/89 & 4/90, approx. 102 mins, (Remastered). (CR scenes also used on CR Remembered Vol. 2; NS used on NS Early Years. Vol. 1)

**#7 CONRAIL, NS, CSX EAST CENTRAL IN (& HAMILTON, OH)- EARLY 90s VOL. 1:** Many freights, ex-PC/PRR Richmond, IN Yd., IN Hi-Rail ALCO C420, Triple Crowns, Rail Train, Muncie, New Castle, Union City, Bluffton, Winchester, IN & Hamilton, OH, 4 & 7/90, approx. 103 mins. (Remastered). (CR scenes also used on CR Remembered Vol. 2; CSX used on CSX Early Years Vol. 1.)

**#8 CONRAIL & NS E. CENTRAL IN- EARLY '90s VOL. 2:** Muncie, Union City, Richmond, Winchester, New Castle, & Millville- Triple Crown, ATSF EMD, N&W, UP, GT locos, 7 & 11/90. Approx. 1 hr 20 mins. (Remastered) (CR scenes also used on CR Remembered Vol. 2 & 3.)

**#9 CONRAIL, NS, & CSX EAST CENTRAL IN- EARLY 90s VOL. 3:** Triple Crown, var. freights-Muncie, Winchester, Millville, New Castle, Richmond, Springport, Albany, Connersville, IN, Fed DOT Car, CSX/C&O Muncie Yd., Amtk Connersville Statn., snow, 11/90, 2/91 Approx. 105 mins. (Remastered) (CSX scenes also used on CSX Early Years Vol. 1; CR used on CR Remembered Vol. 3.)

**#10 CONRAIL, NS, CSX EAST CENTRAL IN- EARLY 90s VOL. 4:** Similar towns of East Central IN, including Oakville, Daleville, & Redkey, with some snow scenes, NS Mid train Grain, Sperry Car, a CR grain shove, a GT GP38-2, ex PRR cabin on CR Local, 1 & 5/91. Approx. 110 mins., (Remastered 3/2019) (CSX scenes also used on CSX Early Years Vol. 1; CR used on CR Remembered Vol. 3.)



- #11 CONRAIL & NS E.-C. IN (& Campbellstown, OH)-EARLY '90s VOL. 5:** See NS rail train, UP SD60s, NS RP slug, Triple Crown, var. freights, Muncie, Millville, Parker City, Farmland, Union City, Cowan, IN & Campbellstown, OH, 5/91 (**Remastered 4/2019**). (CR scenes also used on CR Remembered Vol. 3.)
- #12 CONRAIL & NS EAST CENTRAL IN-(WITH NKP 587 STEAM) EARLY '90s VOL. 6:** NKP 587 Steam Frankfort-Muncie-return, CR/NS freights, KCS, SP, DRGW units, CR Qual. GEs, work-ballast train-Muncie, New Castle, Millville, Richmond, Hagerstown, IN, 5 & 10/91. (**Remastered 3/2020**) Apx 105 mins. (Scenes from this video used also on our Mixed Steam Action Vol.1; CR Remembered Vol. 4; & NS Early Years Vol.1- see our Featured Series Section.)
- #13 CONRAIL & NS E. CENTRAL IN-EARLY 90s V. 7:** Trip.Crown,GP50s,40xs,59, CR stack,SP GP60s,CR Des.Storm SD50,NS mid train helpers, 7 & 8/91 (CR scenes also used on our CR Remembered Vol. 4 video.)
- C/S#14 CAB RIDE CSX LOSANTVILLE-RICHMOND, IN SOU 4501 STEAM, WITH CR & NS IN FREIGHTS 90s:** CSX 6049 & Chessie 6510 cab ride on ex-C&O now gone, SOU 4501 Steam, CR & NS freights, ex-NKP/N&W cabs.-Richmond, Millville, Springport, Muncie, New Castle, Parker City, IN, 9; 10/91. (CSX scenes also used on CSX Early Years Vol. 1; CR used on CR Remembered Vol. 4; steam used on our Mixed Steam Action Vol.1 video.)
- C#15 CAB RIDE CSX RICHMOND, IN-FERNALD, OH 90s:** Cab ride on CSX 4618 & slug 2264, switching IN & OH, Okeanna High & Elkhorn Trestles, 9/91(CSX scenes also used on our CSX Early Years Vol. 1 video.)
- #16 CR, NS, CSX E. CENTRAL IN (& SIDNEY, OH) EARLY 90s VOL. 8:** CR Qual. GEs, UP units, Trip. Crown, loading of ex-NKP/N&W cab.,10/91 & 12/92. (CSX scenes also used on our CSX Early Years Vol. 1; CR used on CR Remembered Vol. 4 & 5 videos.)
- #17 CONRAIL & NS EAST CENTRAL IN EARLY 90s VOL. 9:** Freights at Muncie, Hagerstown, Richmond, CR train into emerg., M&W model RR, 2 & 3/92. (CR footage also used on our CR Remembered Vol. 5 video.)
- #18 CONRAIL & NS EAST CENTRAL IN EARLY 90s VOL. 10:** Lots of freights, some w/ UP & GT units, Triple Crowns, sulphur train, CR high-wide, 3 & 7/92. (CR footage also used on CR Remembered Vol. 5 video.)
- S#19 CONRAIL & NS (W/ N&W 611 STEAM) E.-C. IN EARLY '90s VOL. 11:** Many freights, ATSF Warbonnets, UP units, CR 6707 Yellow ribbon unit, Triple Crowns, CR & NS Schnabel car, N&W 611 Steam 061, 6/92.(CR scenes also used on CR Remembered Vol. 6; steam used on Mixed Steam Action Vol.1 vid.)
- #20 CONRAIL & NS MUNCIE, IN 1992:** Many freights in Muncie at the CR/NS crossing, Triple crowns, CR, NS, UP, BN, Amtrak P30 units, & more, 7 & 8/92. (CR footage also used on our CR Remembered Vol. 6 video.)
- #21 CONRAIL, NS, CSX FREIGHTS FROM IN TO OH:** CR & NS freights, some CSX. NS GP59 Op. Lifesaver, UP, ATSF units, Trip. Crown, 6/92; 9 & 11/93. (CSX scenes also used on our CSX Early Years Vol. 1 & 2; CR scenes used on our CR Remembered Vol. 6 & 7 videos.)
- #22 CONRAIL & NS EAST CENTRAL IN EARLY 90s VOL. 12:**E. Cent. IN, Triple Crowns, Schnabel Car, LORAM blst., ASRY GP9, CR SD60Ms, 10/92 & 2/93. (CR scenes also used on our CR Remembered Vol. 6 video.)
- #23 CONRAIL & NS EAST CENTRAL IN EARLY 90s VOL. 13:** Ft. Wayne, Richmond, Winchester, Muncie, Millville, IN, sulphur train, Triple Crowns, Feb. snow storm, Mail 44, CR GP30s, Sperry Rail, burro crane, 12/92 & 3/93. (CR footage also used on our CR Remembered Vol. 7 video.)
- #24 CONRAIL, NS, CSX EAST CENTRAL IN EARLY 90s VOL. 14:** Freights, CR Mail 44, INPI, Trip. Crowns, CSX-ex-C&O Chicago Line removal, 4 & 5/93. (CSX footage also used on our CSX Early Years Vol. 2; CR scenes used on our CR Remembered Vol. 7 video.)
- #25 CONRAIL, NS, CSX EAST CENTRAL IN EARLY 90s VOL. 15:** Triple Crowns, freights, CSX/RF&P, more ex-C&O rail removal CSX rail train D020, 4, 5/93. (CSX footage also used on our CSX Early Years Vol. 2; CR scenes used on our CR Remembered Vol. 7 video.)
- #26 CONRAIL, NS, CSX EAST CENTRAL IN EARLY 90s VOL. 16:** Action with ATSF Warbonnets, Triple Crown, end of ex-C&O Richmond track, 5/93 & 6/94. (CSX footage also used on our CSX Early Years Vol. 2 video.)
- #27 CONRAIL & NS EAST CENTRAL IN EARLY 90s VOL. 17:** Many freights shot in Muncie, Richmond, Farmland, Portland, Winchester, New Castle. New CR SD60Ms, CR Yellow Ribbon SD50, 6706. NS Local switches & track improvements, 6/93.
- S#28 NKP GLORY E-C IN, NKP 587 & 765 (W/ CR & NS ACTION):** Steam, Muncie, Tipton, MI City Line; CR-NS-Argos, New Castle, Muncie, Knox, IN, 7/93; (steam action also used on our Mixed Steam Action Vol.1 video.)
- #29 ALL CONRAIL 1990s: (Not available- now remastered as video ALL CONRAIL AT HORSESHOE CURVE & ALTOONA, PA & EC IN 1993, see Pg. 1.)** See Amtrak & CR at Horseshoe Curve, Altoona, Juniata PA Shops, & Muncie & Winchester, IN action. CR Local w/ CR cab, 8/93.
- #30 CR & NS E-C IN EARLY 90s (W/ MONON F's) V. 18:** Monon FP7, F7 IN State Fair, freights at Muncie, Ft. Wayne, Winchester, & Richmond, 8 & 9/93.
- #31 CSX/NS JUNCTION HAMILTON, OH EARLY 90s:** CSX & NS, stacks, Triple Crowns, B&O, L&N, GT, SOU pwr, slug, WILD 101 Local cab, 11/93 & 2/94. (CSX footage also used on our CSX Early Years Vol. 2 video.)
- #32 CONRAIL, NS & CSX EAST CENTRAL IN (& HAMILTON, OH) EARLY 90s VOL. 19:** Many freights in Muncie, Richmond, Winchester, Terre Haute, IN & Hamilton, OH, with BN, GT, ATSF, UP units, NS SD70s, Triple Crowns, Halle Tower, 12/93 & 2/94.(CSX scenes also used on CSX Early Years Vol. 2 vid.)
- #33 CONRAIL RAIL REMOVAL BRADFORD, OH-REDKEY, IN 1994:** See CR take up ex-PRR with rail train, & 5572 & SD40-2. 5572 for interior shots, small town shots along the way of CR work. Some freights at Union City depot- inspection & mail train with some others, 5/94.
- #34 CONRAIL & NS MUNCIE, IN 1994:** Many freights, locals, Triple Crowns, old & new CR & NS power, NS GP59 Oper. Lifesaver, GT & WC units, 6 & 7/94.
- #35 CONRAIL & GT/CN SOUTH BEND, IN BUSY JUNCTION MID 90s:** Busy junction w/ CR & GT/CN freights, locals., also some NS. Filmed 3/95.
- #36 A DAY WITH NORFOLK SOUTHERN EAST YARD MUNCIE, IN, 1990s:** We see on this video all NS shot from NS's East Yard in Muncie, with lots of through and local freights, switching, new and older units, some SP power, see the yard tracks, including wye track.
- #37 CONRAIL & NS IN OH & IN 90s:** Aftermath 24 car NS derail. Camden, OH, wreck/test train, ballast spread, & CR replacing ties Winchester & Farmland, IN.
- #38 A DAY WITH CONRAIL & CSX GARRETT, IN 1995:** We spend a day here near the Amtrak shelter/e-B&O depot in July 1995 filming of CR & CSX freights, with a Chessie caboose 903039, some switching, local, ex-B&O buildings, Garrett RR Museum, etc.
- #39 THREE HOTSPOTS-MI & OHIO VIA/AMT. GT/CN, CR 1995:** **now Remastered as RAILROAD HOTSPOTS, BUTLER, IN, E. LANSING & DURAND, MI (1995)™ WITH CN/GTW, CP/SOO, CSX, AMTRAK/VIA, CR, CMR, see page 1.)**
- S#40 AMTRAK IL TO IN TRIP (WITH LIGHT ACTION MUNCIE, IN) 1995:** Triple Crown & CR units at Muncie, IN- Chicago Union Station, & Amtrak Train ride Chicago to Monon & Indianapolis, IN -Hoosier State Train 318- AMT switches, equip. along the way. Pere Mar. 1225 steam Owosso, MI.
- S#41- FAN TRIP AT STEAMTOWN W/ LACKAWANA 1661/MILW 261; WHITEWATER VALLEY RR '90s:** Scranton, PA to Binghamton, NY trip, DLW C425, NYSW GPs, C430, SOO SDs, CP SDs, & MTW C424, steam 261 & 1661 action, WVT RR Connersville, IN to Metamora, Lima loco, horse towed canal, more.
- S#42 STEAM TRAIN RIDE STEAMTOWN PA 1995:** Steam trip Scranton-Moscow, PA, CP 2317 4-6-2 Pacific, switching 2317, train action, DLW C425 ALCO.
- S#43 CONRAIL & NS IN INDIANA & TOUR OF STEAMTOWN PA:** Tour of Steamtown, PA, NKP 759 steam, Lima unit, CN 3254 2-8-2, CN 2317 switching, SOO 519, UP Big Boy, B&M 4-6-2, buildings, etc. CR & NS action in IN, Triple Crown Yd. Ft. Wayne & Decatur, CR local, & more, 8/95.
- C#44 INDIANA HI-RAIL CAB RIDE INDIANNA 1995 VOL. 1:** Cab ride on IHRC from Connersville to New Castle, IN, on IHRC ex-ATSF 344, switching cars, CSX interchange, scrap yd., on ex-NYC & ex-NKP Connersville Br., through Milton & Cambridge City, & New Libson, IN, etc.
- C#45 INDIANA HI-RAIL CAB RIDE IN & OH 1995 VOL. 2:** New Castle, Rushville side, Connersville Br., switch Ford, New Libson, Cambridge City, IHRC, 7/95.
- C#46 IN HI-RAIL LOCAL CAB RIDE IN & OH '95 V.1:** IHRC cab ride, switching-IHRC C420 365 & GP35 371, ex-NKP Clover., 2 NS freights, Bluffton, IN 10/95
- C#47 INDIANA HI-RAIL LCOAL CAB RIDE IN & OH 1995 VOL. 2:** Cab ride on IHRC 365 Craigsville, IN to Delphos, OH, through Decatur, IN & Ohio City, Pleasant Mills, & Willshire, OH, problems with track vandals along the way on the ex-NKP Cloverleaf, some switching., 10/95
- C#48 INDIANA HI-RAIL LOCAL CAB RIDE IN & OH 1995 VOL. 3:** Cont. cab ride to Delphos, OH, switching back West & East again for more work, 10/95.
- #49 FOSTORIA, OH. C&O/B&O/CSX/NS JCT TRAIN HOTSPOT 1996:** (Note: this title is now **remastered version now called FOSTORIA, OH CSX & NS JUNCTION ACTION 1996, VOL. 1 NEW 2/2019**) in our Featured Series Area, Page 1)
- #50 CR/AMTRAK -BEREA INTERLOCKING OH MAR. '96:(See pg.1-remastered-now as BERE, OH INTERLOCKING W/ CONRAIL & AMTRAK, 1996)**
- #51 MUNCIE, IN, CONRAIL & NS MID 90s, NS:** CR & NS in Muncie area, new SP unit, UP, LMS pwr, NS's new GEs & CR's new units, T. Crown, 4 & 5/96.
- #52 ALL NORFOLK SOUTHERN EAST CENTRAL IN MID 90s:** We take a look at all NS freights in the towns of Muncie, New Castle, Hagerstown, & Richmond, IN, new GEs, Triple Crowns, WC F45 & AC power, Stacks, TOFCs, Auto Racks, Sulphur, Grain, etc., 5 & 6/96.
- S#53 RR ACTION AT DURAND, MI & RR DAYS 1996:** Spend time at Durand RR Days, with some GT/CN, VIA, action, along with Pere Marquette 1225 Steam, train show, Corunna & Owosso, MI areas, & some shots at NS's Muncie East Yards, 5/96.

**S#54 KY CENTRAL STEAM SPECIAL 1993:** We ride behind the KY Central 11 2-6-2 Steamer from Paris to Marysville, KY. R. Baker Amateur Tape

**S#55 LOGANSPOUT, IN IRON HORSE FEST STEAM, CONRAIL WRECK 1996:** Showing steam action of C&O 2716 2-8-4 with TPW 1500 F7 to Burnettsville, IN & back. Coverage of CR BUIN derailment, cleanup, first trains through repaired area, RJ Corman wreck equip., 12/96.

**C#56 ALGOLMA CENTRAL TRIP CANADA/CONRAIL AVON YARD 1990s:** Take a ride on AC from Sault Ste. Marie to Hearst, Ontario, Canada, FP7s & great scenery, cab ride on Ontario Northland. Then we see some CR at E Tower in Avon Yard, 1990s.

**S#57 N&W 1218 ALL STEAM:** All steam shots of N&W 1218 by R. Baker (Amateur Video), Bellevue, OH & on board train, 1990s.

**S#58 STEAM N&W 1218 & 611/HUCKLEBERRY RR:** OH N&W Steam, on board to Portsmouth, OH, DRGW 464 Flint, MI. 611 by K. Lehman E- C IN, 1990s.

**S#59 CLINTON & BUSH CAMPAIGN/CONRAIL/CIRCUS TRAINS/N&W 611 1990s:** Clinton & Bush trains, CR & Circus Trains at Sandusky & Huron, OH, 611 steam Norwalk, OH, NKP 587 Bellevue, OH, AMT Turbo Findlay, OH; TL&W, CR & NS Erie, PA, GE deadlines- (by R. Baker- Amtr. video, 1990s).

**S#60 TENNESSEE VALLEY, CHATTANOOGA, STEAM CAB RIDES VOL. 1, 1997:** Features 2-8-0 610 cab ride, SOU 4501, Missionary Ridge tunnel, Grand Jct. depot, L&N u25B, C of G 4-4-0, L&A 4-6-0, WA-TVA 8021 ALCO, H&S 913 ALCO, WAB cab., downtown arrow, 6/97.

**S#61 TENNESSEE VALLEY CHATTANOOGA, TN STEAM VOL. 2 1997:** We continue with Vol. 2 with a train ride on Downtown arrow with GP7L 1829, to Chattanooga & back to Grand Jct. Missionary Ridge tunnel, with a few odd scenes. Also 2-8-0 610 Steam action, 6/97.

**S#62-NKP 587-MONON FP7 96-ITM TRAIN RIDE '98:** NKP 587 Steam & Monon FP7 96 trip to Cicero, IN, run-bys, IN Transp. Museum shots, MON 50 & 5/98.

**S/C#63 CAB RIDE-NKP 587, MON FP7 83, TROLLEY:** IN Transp. Museum-cab rides NKP 587 Steam, MON FP7 83, Noblesville-Fishers, IN, ITM trolley, 5/98.

**#64 BNSF AT GALESBURG, IL 1998:** (Not available but now available as & now remastered-see page 1). See all early BNSF with lightly marked & new BNSF paint on many units. BN, ATSF, Warbonnet units, as BNSF is new. Also some new EMDs, GEs, SD75MACs, & some lease units, C44-9s, & more, 6/98

**S#65 GALESBURG, IL RR DAYS VOL. 1 1998:** See MILW S3 261, BNSF yards on Metra, CB&Q Nebraska Zephyr, interior of EMD E5, AMT GE P42DC & cars, & AMT 5 & 6 CA Zephyrs, more trains, SD9s switching, CB&Q cab., RPO, 3006 Hudson at Galesburg Museum, 6/98.

**#66 GALESBURG, IL RR DAYS CB&Q/BN/BNSF VOL. 2 '98:** More action, BN SD9s switching, Nebraska Zephyr, SD75MACS-GT/CN train, 6/98.

**#67 CONRAIL, CSX, NS, I&O ACTION CINCINNATI, OH Late '90s:** [Video not available- this has been remastered into our new title WINTON PLACE ACTION WITH CSX, NS, CR, & I&O (1998)see pg.1.] Train action of CSX, CR, NS, I&O, Triple Crown, North of Cincinnati, near CSX Queensgate Yards, 7/98.

**#68 CINCINNATI UNION TOWER WITH SOME CSX & NS 1998:** Take a tour of CUT's inside and out restoration work, and see some CSX & NS action from the 5<sup>th</sup> floor of Tower A. Also some intermodal cranes at work, switching, arrivals and departures, 7/98.

**S#69 CONRAIL IU TOWER INDIANAPOLIS, IN LATE '90s:** We see NKP 587 Steam excursion past IU Tower & Union Station, some CR transfers, new SD70MACs & SD80MACs, some CSX GEs on the wye, it's still CR, not quite yet CSX territory.

**#70 CONRAIL & NS MUNCIE, IN LATE '90s VOL. 1:** Watch many freights of CR & NS at this busy junction. See SD80MACs, SD70MACs, SD701s, Wide cab GEs on CR & NS. New diamond being installed by CR crew, 9 & 10/98.

**#71 CONRAIL & NS MUNCIE, IN LATE 90s VOL. 2:** More CR & NS freights, leased Amtrak F40s followed out to NS East Yard, & more, 9 & 10/98.

**#72 CONRAIL & NS MUNCIE, IN BEFORE & AFTER THE SPLIT-UP LATE 1998-1999:** Here we take a look at CR before the ultimate split-up between CSX & NS in Oct '98 & April '99, then the aftermath on June 4, '99. Lots of motive power including run-through's on CR/CSX.

**#73 HUGO JUNCTION FT. WAYNE, IN '98-'99:** Busy junction between NS's ex-LE&W/NKP & WAB SW of Ft. Wayne, various action, 12/98 & 3/99.

**#74 CSX & NS MUNCIE, IN '99:** Post-CR split w/ CSX & NS, CSX operates ex-CR at Muncie w/ NS, CR locos NS freights, 7/99 (CSX from CSX Early Yrs. V2)

**#75 NS AT ALEXANDRIA, IN NEW CONNECTION & SOME FREIGHTS 1998-99:** New NS conn. built, surveys, new signals, trains 144, 19K, 143, -8/98, 6/99.

**#76 NS AT NE TOWER FT. WAYNE, IN 1999:** This busy junction of the ex-NKP & WAB & ex-NS Chicago Line, with many variety of freights, Triple Crowns TOFC, etc., CR, NS, & lease units, CP run-throughs 38 & 39K. Some shots of NS East Wayne Engine Terminal, 8/99.

**#77 CSX DESHLER, OH JUNCTION 2000: Not Available- now Remastered as DESHLER, OHIO DIAMOND ACTION WITH CSX (2000), VOL. 1- see pg. 1.**

**#78 INDIANA & OH RR TRIP -EX-DT&I SPRINGFIELD TO LIMA, OH 2000 VOL. 1:** Take a ride on the I&O's ex-DT&I on a passenger train with I&O 4030 GP40, with High Bridge footage at Quincy, OH, & pass freight train 258 at Uniopolis, OH, 6/00.

**#79 I&O RR TRIP SPRINGFIELD TO LIMA, OH (WITH SOME CSX) 2000 VOL. 2:** Continue I&O trip, into Lima & back. DT&I box cars, also follow the train by car, & catch I&O freight with SD40 & GP40, NKP 779 steam, NKP 1091 cab., & NKP 5 bus. car, CSX at Lima & Quincy, 6/00.

**#80 CSX & NS HAMILTON, OH JUNCTION 2000:** Ex-PRR/NS, ex-B&O/CSX jct. new dir. op.-all SBs on NS & all NBs on CSX. Many freights in action, 6/00.

**C#81 CSX TOLEDO BRANCH & BEE LINE CAB RIDE/AVON YARD ACTION 2002:** Take a cab ride on CSX Q13216 stack from Ridgeway to Toledo, OH, meet a few trains along the way, some Avon Yard action while on train Q30826, 5/02.

**C#82 CN DETOUR TRAIN ON CSX WALBRIDGE TO RIDGEWAY, OH & BEE LINE 2002:** CSX cab ride Z97930, CN 2597, 2533 944CWs, & BEE LINE, 6/02.

**C#83 CSX ST. LOUIS LINE INDIANA CAB RIDE 2002:** Another cab ride on CSX Q37709 & Q23410 in Terre Haute & St. Elmo, IN areas, ex-PRR track, 6/02.

**#84 CN/WC/ALGOMA CENTRAL AGAWA CANYON CAN./BRANSON SCENIC RR 2004-05:** Sault Ste. Marie, MI to Agawa Canyon Pk. trip & Montreal Falls, Canada, CN 9530 & 9461 GP40-2Ls, Mont. River Trest. '04. Branson Scenic AR & MO trip '05, ghost towns, tunnels, GP30m 99 & F9 98 ex-MP/UP line.

**#85 UP & BNSF ROCHELLE, IL, DOUBLE DIAMONDS 2004:** (This title is now remastered See pg. 1)

**#86 UP & BNSF ROCHELLE, IL/CSX & NS MUNCIE, IN 2004:** First we see a lot of different types of train action at Rochelle, IL at the double diamonds, with similar road power a in #85 with lease units, then we head to IN & film NS, CSX, & Triple Crown action, 6/04.

**C#87 CSX INDIANA-BEE LINE CAB RIDE 2004 VOL. 1:** Cab ride on CSX Q13215 Stack, -Indianapolis, Lawrence, McCordsville, Fortville, Ingals, Pendleton, Anderson, Chesterfield, Daleville, Yorktown, Muncie, Selma, & Parker City, IN. UP SD40-2 3373 & UP 8-40B 1819, 6/04.

**C#88 CSX INDIANA-BEE LINE CAB RIDE 2004 (& ON TOLEDO BRANCH & B. LINE) VOL. 2:** Q13215 Farmland, Winchester, Union City, IN & OH-U. City, Ansonia, Dawn, Versailles, Sidney, -cab ride Tol. Br. & BEE Line, Auto Rack Q23115- Tol., Ridgeway, Pemberton, 8-40CWs CSX 7776, CSX/CR 7386, 6,8/04.

**C#89 CSX OHIO BEE & TOLEDO LINE CAB RIDE 2005:** CSX mix freight cab ride Q30821 SD40-2s CSX 8828 & CEFX 3104, Sidney, Quincy, De Graph, Bellefontaine, Rush Sylvania, Big Springs. Then Ridgeway & on Toledo Br., Kenton, Dunkirk, Arlington, Findlay, BG, Lime City, & Oregon Rd. Snow, 1/05.

**#90 CSX AVON BIG 4 YARD ACTION 2006 VOL. 1:** In this ex-NYC/PC Yard that opened in 1961, we see lots of yard action- hump work, through trains arriving for fuel/crew changes, engine house action, geometry inspection train, Herzog ballast train, Tower 1, 10/06.

**#91 CSX AVON BIG 4 YARD ACTION 2006 VOL. 2:** More yard action, Tower 1, now under CSX control, pullers, engine house, main line trains arriving/departing, geometry train, trains into yard, & more, 10/06.

**#92 CSX AVON BIG 4 YARD ACTION 2006 VOL. 3:** The last of this yard series, see pullers, road power around the engine house, more main line trains, new GEs, balloon track power, freights into yard, hump power, van cranes, & inside Tower 1 again, many freights, 10/06.

**#93 MARION, OH ACTION DOUBLE-DOUBLE DIAMONDS 2006 VOL. 1:** At Marion, OH freights on ex-EL/NYC/PC Cleveland-Indianapolis, IN Line, C&O Toledo-Columbus Line- now CSX; & PRR Sandusky-Columbus Line- now NS, shots of ex-EL now CSX Yard, 10/06.

**#94 MARION, OH ACTION DOUBLE-DOUBLE DIAMONDS 2006 VOL. 2:** More Marion, CSX & NS freights, UP SD50s, GEs, EMDs, War Bonnet, etc., 10/06.

**#95 CSX JUNCTION DESHLER, OH 2006/2007:** We take a look at CSX crossing of two B&O lines- Cincinnati to Toledo Line & the Chicago to Willard Line. CSX, lease, & different road units, a lot of various freights. We were here in Title #77 previously. 10/06 & 3/07.

**#96 CSX & NS MUNCIE, IN 2007/2008 VOL. 1:** Spend some time at Muncie watching many freights of both roads, new & older GEs & EMDs, NS's F9s on Special, restored C&O Depot, ex-C&O ROW, NS & CSX running about equal trains, 10/07 & 12/08.

**#97 CSX & NS MUNCIE, IN 2008 VOL. 2:** From Vol. 1, more CSX & NS, NS pattern of split at 6<sup>th</sup> St.-trains go NE to Ft. Wayne, or NW to Elkhart on ex-NYC/PC/CR, or West on ex-NKP to Lafayette. Large & Local trains, 3,11,12/08.

**#98 CSX & AMTRAK FOLKSTON, GA FUNNEL 2009:** Folkston, GA-located N. of Jacksonville, FL, funnel for traffic in/out of FL. See CSX & AMT Auto Train, Silver Meteor, & Silver Star, new GEs & rebuilds, ACs, MACs, coal, stone, container, stack, mix, & Tropicana trains, 5/09.

**S#99 NKP 765 STEAM NW INIANA 2009:** We're at North Judson & La Crosse, IN showing run-bys of a push-pull of NKP 765 & Ohio Central F40 452, North Judson Museum shots, shortline C&O ISD18, CR SW9, GP20, EL S-1, C&O K4 2-8-4 locos, 5/09.

**S#100 TRAIN FEST OWOSSO, MI- SP DAYLIGHT 4449 NKP 765 STEAM 2009:** Train ride & some run-bys, with Great Lakes Central & Little river RR units, Steam Institute with steam, live steam, then at Durand, MI some CN & Central MI trains switching, & Durand depot, 7/09.

**S#101 STEAMTOWN SCRANTON, PA 2009 VOL. 1:** We see CN 3254 2-8-2 Mikado on a trip to Nicholson, PA, short cab ride on CN 2317 4-6-2 Pacific, Red Arrow Phila Transit car 80, some engines such as NKP 517 GP9, NKP 759 Berk, RDG RS3 467, & more, 9/09.

**S#102 STEAMTOWN SCRANTON, PA 2009 VOL. 2:** Continue with CN steam 2317 action, static displays IC 790 2-8-0, CNJ work crane, roundhouse tour, viaducts at PA locations, back to Scranton- ex-DLW Depot, GVT ALCOs & NKP GP9 514 operating, & more displays, 9/09.

**S#103 STEAMTOWN SCRANTON, PA '09 VOL. 3:** Final vid, of shops, NKP unit, run-bys, arrivals/departs., ALCOs, steam, RS32 switch, GVT equip., 9/09.

**S#104 PRR STRASBURG RR MUSEUM & ALTOONA RR MUSEUM 2009:** See many displays at both museums on this video, showing static displays, a lot of locomotives of steam, GG-1, E-7, GP9, CR GP30, dining car, PRR FD2 flat, some of NS passing by, & more, 9/09.

**#105 AMTRAK & NS HORSESHOE CURVE & GALLITZIN, PA 2009:** Trip to PA at well-known sites. See a lot of freights with modern units, helpers, CSX, UP, BNSF power, many older CR units still in blue, AMT P40s on the Pennsylvanian, shots around the curve, 9/09.

**#106 NS AT CRESSON. GALLITZIN, HORSESHOE CURVE 2009:** Take another trip back in Oct. to these great ex-PRR/PC/CR places to see many different trains in action, see the helper station at Cresson, static PRR cabooses, tunnel action, the curve, & at Altoona, 10/09.

**#107 FLORIDA EAST COAST FL/NS & CSX GEORGIA & INDIANA 2010:** See FEC at Daytona Beach-Holly Hill, FL, SD70Ms, & several locals with GP40-2s. At Dalton, GA see various CSX & NS trains, BNSF pusher. Then CSX & NS at Muncie, IN with many freights, 1/10.

**#108 CSX & NS MUNCIE, IN 2010:** At Muncie we see CSX & NS- gon, TOFCs, FRA Inspection car, grain trains, Triple Crown, mix, locals, & more. Older & newer power- SD60, GP38-2, GP40-2, SD50s, AC6000, ES44DC, 8-40CW, Op. Lifesaver, BNSF & CR units, & more, 2/10.

**#109 NORFOLK SOUTHERN WABASH, IN JCT 2010:** See NS on the ex-NYC Anderson to Elkhart Line, & ex-WAB Ft. Wayne to St. Louis Line. Also ex-WAB depot, Big 4 cut, new connection, SD50s, 60s & 70s, SD70Ms, & -2s, CR units, Triple Crowns, various freight types, 3/10.

**#110 NS LOCAL ACTION E. CENTRAL IN 2010:** NS Locals L80/L83 Redkey & Portland, switching, BC RAIL 4614 8-40CME, CN 8858-SD70M-2, 4/10.

**#111 CSX & NS BERE, OH ACTION 2010:** NS, CSX action, new track arr. after CR split, Lake Shore Lines=NS, Big 4 Lines=CSX. CR blue units, 4/10.

**#112 CSX AT TERRE HAUTE, IN 2010:** At Terre Haute to see some CSX action, where now the diamonds were removed after the CR split, the CE&I main will become a CSX Chicago main, Also scenes at Linden showing the ex-Monon, & Frankfort showing the NS yard, 6/10.

**C#113 ROYAL GORGE RR CAB RIDE 2010:** ex-DRGW line cab ride thru Rockies- Canon City, CO- F7A 403, F7B 1503, incline to Gorge, & scenery, 10/10.

**S#114 DURANGO & SILVERTON NARROW GAUGE 2010 VOL. 1:** We see the Durango museum. Shops, yards, tracks, & equipment such as steam, cabooses, etc. Also see some action of steamer 481 at Hermosa & Durango, some switching, & a train ride with 481 & 482, 10/10.

**S#115 DURANGO & SILVERTON NARROW GAUGE 2010 VOL 2:** Vol. 2 of train roundtrip to Silverton, CO, locos 481, 482, scenery, & pace the train, 10/10.

**#116 COLORADO SHORT RR SUBJECTS WITH TRAIN RIDES 2010:** Royal Gorge Park, train ride, & scenery. Cumbres & Toltec Scenic Ry., facilities, locos, yards, depots, shops, engine house, coaling twr., & equip. Durango & Silverton Nar. Gauge at Durango & Silverton, CO. #481 pacing, train ride, 10/10.

**#117 CSX & NS AT FOSTORIA, OH 2010 & 2011 VOL. 1:** ex-C&O, B&O, NKP/N&W Lines, F Tower from the park, before the stand. Various trains, locals, & transfers, GEs & EMDs, rebilt. GP40-2s. Three double track mains cross, three yds, & Ford's Auto Mixing Center, 11/10.

**#118 CSX & NS AT FOSTORIA, OH 2010 VOL. 2:** Continues from Vol. 1, trains at the park, ex-B&O-CSX depot lot, etc., Locals, & Transfers, 11/10, 1/11.

**#119 CSX & NS MUNCIE, INDIANA ACTION 2011 VOL. 1:** See the latest power on CSX & NS, with BNSF & UP units. See new CSX trains, CR units, & ATSF Warbonnets. See CSX Q132 & Q108, windmill train, many GEVOs & SD70MACs, Triple Crowns on NS, & more, 1 & 2/11.

**#120 CSX & NS MUNCIE, IN 2005-06/08-11:** (B. Jetmore)- Geom. Train, Trip. Crown, Whitewater Valley RR Mus. Metamora, IN. NKP 765 Ft. Wayne steam runs at Ft. Wayne. CSX's Q106 stack with KCS, NS L80 local at Albany & Dunkirk, & windmill train at Muncie, 2005-06, 2008-11

**#121 CSX & NS MUNCIE, IN AREA 2009-11:** (B. Jetmore), latest GE & EMDs, mix, Triple Crowns, stacks, Locals, Q131 & 132, Q106 & 107, windmill, 2009-11

**#122 CSX & NS EAST CENTRAL IN 2008-11:** (By B. Jetmore), NS & CSX, Albany, Portland, Redkey, Muncie, Dunkirk, IN WE/GATX SD40-2, WE/DRGW SD40T-2, B32-8s, Dash 9s, KCS, & SD70M-2s. CSX Q106 & Q111 WB stacks, Office Car Special on ex-NKP, 2008-11.

**#123 CSX & NS MUNCIE, IN 2011 VOL. 2:** Latest pwr, BNSF, UP, CR-painted, ATSF Warbonnets, CSX increasing traffic, mix trains, Triple Crown. 3 & 4/11.

**#124 CSX & NS MUNCIE, IN 2011 VOL. 3:** More w/ NS, CSX, BNSF, UP, AC6000s & 4400, GP38s, 40-2s, 50s, & 59s, SD40-2s, & GP30 slug, 5 & 6/11.

**#125 SAGA OF EX-NKP/N&W NS MUNCIE, IN LINE 2011:** Story of NS line through Muncie to Arcadia, OH, had 4 yrs. of stored spine cars. Ex-CR/PC 3807 SD38, GP59, & GP50 switching cars out, replacing ties, crossing maint., rebuilding part of line for ethanol plant near Portland, 3 & 8/11.

**#126 CSX & NS MUNCIE, IN 2011 VOL. 4:** Continues- BNSF, UP, CSX, & NS units. New diamonds, trains Q008, Q007, V818, modern GEs & EMDs, 8/11

**#127 CSX & NS MUNCIE, IN 2011 VOL. 5:** More NS & CSX trains, GMTX SD60s, AC6000s, UP units, work trains- geom., Herzog ballast, tie train, 9 & 10/11

**#128 NORFOLK SOUTHERN FT. WAYNE, IN 2011:** NS action, ex-WAB & NKP crossed, locals, etc., UP, BNSF, & WLE units, 10 & 11/11.

**C#129 CONRAIL MARION BRANCH CAB RIDE Winter 1998-99:** We take a CR cab ride along with an ex-CR engineer, with a lot of snow, from Avon Big 4 Yard fuel pad in Indianapolis to Anderson, & Elkhart, to Anderson, IN & back, Winter 1998-99.

**#130 CSX & NS MUNCIE, IN 2011 VOL. 6:** NS & CSX action, new loco plant-Progress Rail/EMD, ES44AC, AC4400, Triple Crown, Mix, coal, & more, 11/11.

**#131 VARIOUS RAILROADS OF THE MIDWEST (IL, OH, MI) Vol. 1:** (Filmed by R. Kuhn), at places like Buckland, Delphos, Minster, OH; E. Lansing, MI; Dolton, IL; S. Charleston, OH, & other places, we see RJ CORMAN, IHRC, CSX, GT/CN, IHB, SOO, BN, CBW, CP, IC.

**#132 VARIOUS RAILROADS OF THE MIDWEST (OH, IL, KY, IN) 1998 VOL. 2:** (R. Kuhn), EJE, TPW, CSX, IC, KB&S, SP, CR, IHRC, NS, RJC, NS/NKP SD9, GT, ATSF, P&L at Watseka, Ashton, Kankakee, Streator, IL; Lima, Mortimer, Greenville, St. Mary's, Bellevue, Maple Grove, Marion, Ridgeway, Quincy, Elgin, OH; Louisville, KY; Warsaw, Sellersburg, Watson, Bluffton, IN, & more, 10/98.

**#133 VARIOUS RAILROADS OF THE MIDWEST (OH, IL, MI, IN) VOL. 3:** (R. Kuhn), LNA, CC, BN, VIA, AMT, SP, CN, Corydon Scenic, M&W, CSX, NS, CR, DTS, OC, RJ CORMAN, WLE, Great Miami, GT- Sugar Creek, Coshocton, Lodi, OH; Naperville, Munger, Troy, IL; Durand, Owosso, MI, & more.

**#134 VARIOUS RAILROADS OF THE MIDWEST (WI, OH, IA) VOL. 4:** (Filmed by R. Kuhn), we see Green Bay Mining, GB&W, & WC at Stiles Jct., Green Bay, WI; GT, CSX, NS at Leipsic & Lima, OH; GT, CSX, CC, BN, CNW, SOO, at E. Dubuque, Clinton, & Bettendorf, IA.

**#135 VARIOUS RAILROADS OF THE MIDWEST (OH, IN, PA, VA) VOL. 5:** (Filmed by R. Kuhn), E. Shore RR, CSX, AMT, Tropicana, AMT, CSX, RF&P- Cape Charles, Doswell, VA; CR, P&LE- W. Brownsville, Newell Hill, PA; CSX, CR- Sidney, Lima, Quincy, Findlay, OH; NS, IHRC- Bluffton, Bellevue, OH.

**#136 VAR. RR's OF THE MIDWEST (OH, KY, IN) V. 6:** (R. Kuhn), CSX, NS, CR, GT Hamilton, Wapak., Sidney, Quincy, Cairo, Versailles, Ansonia, Lima, Erie Jct., Jackson Ctr., Van Wert, Celina, Coldwater, Botkins, Mt. Victory, Ridgeway, Marion, Willard, Mt. Orab, Pemberton, Bellevue, & Bluffton, OH. Maysville, KY, & Ft. Wayne, IN

**#137 RJ CORMAN RR IN OHIO:** (Filmed by R. Kuhn), **Note: this Title not available, but now available as RJ CORMAN RAILROAD (WITH NS)- ST. MARY'S & MINSTER, OH LINES, 1990s- see Pg. 1.** RJC action on their St. Mary's & Minster, OH in the 1990s. Dinner Train, Switching, Freights, & more.

**#138 VARIOUS RAILROADS OF THE MIDWEST (OH, MI, KY, IL) VOL. 7:** (Filmed by R. Kuhn), see TSBY, D&M, NS, TPW, UP, CR, ABB, PPU, CSX, WLE, AMT, NS, RJ CORMAN, at places like Watseka, Barborton, Chattsworth, IL; Creston, Fostoria, Medina, OH; Bay City, Alma, MI, & more.

**#139 CR, CSX, NS, AA -OH & IN:** (R. Kuhn), GT, RJ Corman, AMT, Chessie-Wabash, Portland, IN; Toledo, Vickers, Breman, Lima, OH. Freights, psgr, Triple Crown.

**#140 VARIOUS RAILROADS OF THE MIDWEST (IL, IN, IA) VOL. 8 2004:** (Filmed by R. Kuhn), see many freights of BNSF, ICE, UP, CN, UP, NS, BNSF, AMT at places like Clinton, IA; Galesburg, Kewanee, Princeton, IL; Montpelier, Ft. Wayne, New Haven, IN, 2004.

**#141 VARIOUS RAILROADS OF THE MIDWEST (OH, IN, MI) VOL. 9:** (R. Kuhn), many freights of CSX, WLE, CR- Willard, Shelby, Upper Sand., Lima, Cairo, Fostoria, Wash. Ct. House, Newark, Ansonia, OH; NS, MILW, GT/CN, VIA, AMT-Lansing, Durand, MI; SOO/CP IHRC- Evansville, Bluffton, Plymouth, IN.

**#142 VARIOUS FREIGHTS IN NORTHWEST OHIO & IL:** (Filmed by R. Kuhn), we're at NW OH & see many freights of CR, NS, CSX, GT- at Toledo, Alexis Tower, Maumee, Deshler, Leipsic, Lima, OH. Also Kankakee, Dwight, IL- CSX, UP, TPW, SOO/CP, IC, CR, ATSF, AMT, SP.

**#143 VARIOUS RAILROADS OF THE MIDWEST (OH, IL, IN) VOL. 10:** (Filmed by R. Kuhn), NS, UP, SP, CR, ATSF, BN, AMT, CHESSIE/CSX, CEW, CRI, AA, GT, TTI- Campsville, Godfrey, Allamont, IL; Frankton, Kokomo, Marion, IN; Leipsic, Deshler, Hamler, Galatea, OH; Paris, KY.

**#144 CONRAIL, CSX, GT, RJ CORMAN IN OHIO:** (Filmed by R. Kuhn), action at St. Mary's, Alliance, Toledo, Vickers, OH, RJ Corman track work.

**#145 VARIOUS RAILROADS OF OHIO & INDIANA VOL. 1:** (Filmed by R. Kuhn), many freights of CR, NS, CSX, CP, WLE, SOO, in locations- Sidney, Lima, Willard, Galion, Marion, Celina, Cairo, Chatfield, OH, & Mitchell, Bedford, Porter, Burns Harbor, Orleans, IN, etc.

**#146 VARIOUS RAILROADS OF OHIO & INDIANA VOL. 2:** (Filmed by R. Kuhn), more freights of NS, CSX, I&E, RJ CORMAN, Triple Crown, & CP & BNSF units, in cities Kenton, Bellefontaine, Montpelier, OH, & Butler, Chappell, Wabash, Alexandria, IN & more, 2004/06.

**S#147 FREIGHTS OF OHIO & ILLINOIS:** (Filmed by R. Kuhn), see CR, CSX, NS, WLE, NKP 765 Steam, SOO, TPW, UP, SP, AMT in various towns like Toledo, Bucyrus, Crestline, Greenwich, Lykins, OH, & Watseka, Kankakee, Dwight, IL, & more.

**#148 VARIOUS RAILROADS OF OHIO & INDIANA VOL. 3:** (Filmed by R. Kuhn), see again many freights of CSX, I&O, NS, WLE, GT, SOO in places like Oak Harbor, Attica, Marion, Hamler, Lima, Wellington, OH, & St. Joe, Claypool, Ft. Wayne, IN, & more, 2001/2004.

**#149 VARIOUS RAILROADS OF OHIO & INDIANA VOL. 4:** (Filmed by R. Kuhn), we film more freights of CR, CSX, NS, RJ CORMAN, OC, SOO, INRD, IS, AWS at places such as Washington Ct. House, Newark, Columbus, OH, & Bluffton, Evansville, Oakland City, IN, & more.

**#150 VARIOUS RAILROADS OF OHIO & INDIANA VOL. 5:** (Filmed by R. Kuhn), see freights of CSX, NS, AMT, BNSF, UP, CP, RJ CORMAN, at places like Galion, Crestline, Marion, Convoy, Lima, Ridgeway, St. Mary's, OH & South Bend, IN, & more, 2006.

**#151 CONRAIL, CSX, NS OF OHIO & INDIANA:** (Filmed by R. Kuhn), action at Galion, Crestline, Greenwich, Cridersville, Bellevue, Hamler, Celina, Galatea, Lima, OH, & Muncie, Montpelier, Amboy, Seymour, IN, & more, 5, 6, 11/99, 6/02.

**#152 CONRAIL, CSX, NS OF OHIO:** (Filmed by R. Kuhn), see freights of these RRs in various parts in OH, such as- Fostoria, Lima, Celina, Bucyrus, Toledo, Ft. Recovery, Lykins, etc. Also see WLE, RJ CORMAN, units of BN, GT, WC, B&O, CHESSIE, ACL, & more.

**#153 VARIOUS RAILROADS OF THE MIDWEST (OH, IL, IN) VOL. 11:** (Filmed by R. Kuhn), we see CR, CSX, AMT, Triple Crown, I&O, ICE, BNSF, C&E at different areas- Sherwood, Sidney, Quincy, OH; Butler, Monroeville, IN; Savannah, Lanark, IL; E. Dubuque, IA, & more.

**#154 RR'S OF OH & IA: (R. Kuhn), CSX, WLE, I&O, BNSF, IC/CN, UP-Deschler, Brewster, Spencer, Up. Sand., Hamler, Seville, Sterling, OH; E. Dubuque, IA, & more.**

**S#155 VARIOUS RAILROADS OF THE MIDWEST (OH, IL, IN) VOL. 12:** (Filmed by R. Kuhn), NS, GT, IHRC, CN, RJ CORMAN, CR, CNW, UP, BN, SP, IC, TPW, AMT, N&W J 611 Steam -Lima, Celina, Wapakoneta, Deshler, OH; Wellsboro, La Porte, IN; Streator, Gilman, IL, & others.

**#156 VARIOUS RAILROADS OF OHIO & INDIANA VOL. 6:** (Filmed by R. Kuhn), see in these states CR, P&LE, CSX/CHESSIE, SOO, UP, NS, TRIPLE CROWN, ACL in places like Mitchell, Orleans, Seymour, IN; Struthers, Crestline, Botkins, Celina, Lima, OH, & more.

**#157 VARIOUS RAILROADS OF THE MIDWEST (OH, IL, IN) VOL. 13: Note: this video has been remastered & now only available as VARIOUS RAILROADS OF THE MIDWEST (OH, IN, IL), VOL. 13 (AMTRAK, SOO, ATSF, SP, GT, CR, IAIS, METRA, CSX, & NS Mid-'90s-Early 2000s) See Pg. 1.**

**#158 VARIOUS RAILROADS OF THE MIDWEST (OH, IL, IN, IA) VOL. 14:** (Filmed by R. Kuhn), see CSX/CHESSIE/L&N, CNW, BN, SOO, CC, BNSF, UP, AMT, SP, TPW, SOU, N&W, at places like Lima, St. Marys, OH; Streator, Pontiac, Rochelle, IL; SE IA; Bluffton, IN, & more.

**#159 VARIOUS RAILROADS OF THE MIDWEST (OH, IL, IN) VOL. 15:** (Filmed by R. Kuhn), see CSX/CHESSIE, CR, IC, GT, DE, NS, UP, SOO, RJ CORMAN, IHRC, TPW, AMT, UP, at places like Toledo, Jonestown, Celina, Cario, OH; Gilman, Chenoa, IL; Portland, IN, & more.

**#160 VARIOUS RAILROADS OF OHIO & INDIANA VOL. 7:** (Filmed by R. Kuhn), see CR, AMT, GT, NS, CSX, UP, BN, CNW, RJ CORMAN, at various locations such as- Delphos, Jackson Center, Minster, Kenton, Mortimer, OH; South Bend, Muncie, IN, & more.

**#161 VARIOUS RAILROADS OF OHIO & INDIANA VOL. 8:** (Filmed by R. Kuhn), we see CSX, NS, & WLE, CFE, Triple Crown, with some run-through power of UP, SP, BNSF, CP, etc. in locations like- Berea, Greenwich, Delphos, OH; & Wellsboro & Elkhart, IN, 2005.

**#162 VARIOUS RAILROADS OF OHIO & WV 2005:** (By R. Kuhn), see RJ CORMAN, CSX, NS, CFE, I&O, WLE in places like Spencerville, Fostoria, Deshler, Buckland, OH; Durbin, Greenbrier Valley Tourist RR in High Falls, Elkins, WV, etc.

**#163 OHIO HOT SPOTS 2005 VOL. 1:** (Film R. Kuhn), CSX, WLE, NS, I&O, Bellefontaine, Lima, Oak Harbor, Greenwich, Crestline, Leipsic, Bellevue, etc.

**#164 VARIOUS RAILROADS OF OHIO & INDIANA VOL. 9:** (Filmed by R. Kuhn), see more of CONRAIL, CSX, Triple Crown, run-through units UP & GT, Pres. Bush Sr.'s trains, & more, at Kenton, Leipsic, Uniopolis, Hamler, Columbus; Redkey, Muncie, Alexandria, IN, & more.

**#165 VARIOUS RAILROADS OF OHIO & INDIANA VOL. 10:** (Filmed by R. Kuhn), see many freights of CSX/CHESSIE/SBD/L&N/ACL, NS, CR, DODX, I&O, Locals at places like Bloomingburg, Fostoria, Minster, Lima, Ridgeway, OH; & Ft. Wayne, IN.

**#166 VARIOUS RAILROADS OF OHIO & INDIANA VOL. 11:** (Filmed by R. Kuhn), we're at places such as Ridgeway, Bellevue, Oak Harbor, Toledo, Elgin, OH; & Warren, IN, & see CSX, CR, AMT, GT, DE, NS, WLE, AA in action- some run-through power, & more.

**#167 PENNSYLVANIA HOT SPOTS 2007:** (R. Kuhn), in PA see NS, CSX, AMT Horseshoe Curve, Gallitzin, Cresson, Sand Patch Grade. CSX Cumberland, MD.

**#168 VARIOUS RAILROADS OF THE MIDWEST (OH, IN, PA, MD) VOL. 16:** (Filmed by Ron Kuhn), we see roads of CSX, NS, I&O with BNSF, Lease, SP at places of- Cumberland, MD; Princeton, Linton, Switz City, IN; & Mortimer, Glyndale, Ottawa, Marion, OH, & more.

**#169 VARIOUS RAILROADS OF OHIO & INDIANA VOL. 12:** (Filmed by R. Kuhn), at locations like Bellevue, Oak Harbor, Dunkirk, Upper Sandusky, OH; & Mt. Summit, Hagerstown, Muncie, IN, etc. we see CSX, NS, I&O, RJ CORMAN, & WLE.

**#170 INDIANA HOT SPOTS (W/ FOSTORIA, OH) 2006:** (R. Kuhn), Wellsboro, Porter, MI City, Lafayette, IN & Fostoria, OH. CSX, CN, NS, BNSF, AMT, & more.

**#171 VARIOUS RAILROADS OF OHIO & INDIANA 2005 VOL. 13:** (R. Kuhn), CSX, I&O, CFE, OC, NS; BNSF, UP, Lease, HLCX, SP, CEFX, etc. units, Linton, Terre Haute, IN; & Zanesville, Lima, Columbus, Leipsic, OH, & more.

**#172 VARIOUS RAILROADS OF THE MIDWEST (OH, IN, MI) 2002/2004 VOL. 17:** (Filmed by R. Kuhn), see CN, CSX, CP, CR, CFE, WAB. CENTRAL, I&O, NS at various locations like- Porter, Wellsboro, IN; Greenville, Lima, Eaton, Hamilton, OH; Lansing, MI, & more.

**#173 SHORTLINES OF INDIANA & OHIO:** (Filmed by R. Kuhn): see many shortlines like HCRC, IHRC, IN RR, ISRR, I&O, GEAT MIAMI, along with CSX, at places like Enon, Defiance, Harrison, OH City, OH; Terre Haute, Linton, Lawrenceburg, IN, & more.

**#174 VARIOUS RAILROADS OF THE MIDWEST (OH, IL, IN) VOL. 18:** (Filmed by R. Kuhn), at places like Ft. Wayne, Garrett, Waterloo, IN; Marion, Delaware, Findlay, Mansfield, Circleville, OH; Bushwell, Galesburg, IL, with CSX, CFE, OC, WLE, ASRY, P&W, BNSF, & AMT.

**S#175 VARIOUS RAILROADS OF OHIO & INDIANA 2005 VOL. 14:** (Filmed by R. Kuhn), we see NS, CSX, CFE, WLE, Triple Crown, NKP 765, at places such as Butler, Decatur, New Haven, Ft. Wayne, IN; New Washington, Van Wert, Chatfield, Attica, Caroline, OH, & more.

**S#176 VARIOUS RAILROADS OF OHIO & INDIANA VOL. 15:** (Filmed by R. Kuhn), see NS, CSX/CHESSIE/SBD, NKP 765 Steam, GT, CR, IHRC, RJ CORMAN, WLE, at Ft. Wayne, Logosotee, Brownstown, IN; Lima, Quincy, Sidney, Bellevue, Fostoria, Delphos, OH, & others.

**#177 VARIOUS RAILROADS OF THE MIDWEST (OH, IN, MI) VOL. 19:** (Filmed by R. Kuhn), in this video we see GT, CSX, AMT, CR Triple Crown, AA, CP, VIA, at places like Lima, Leipsic, Cairo, Sidney, OH; Butler, Ft. Wayne, IN; Carrolton, Durand, E. Lansing, Vienna, MI, etc.

**#178 VARIOUS RAILROADS OF THE MIDWEST (OH, IN, IL) VOL. 20:** (Filmed by R. Kuhn), we see roads of SP, KBSR, CSX, CR, ABB, GT, NS, WLE, IHRC, etc. at places of Dwight, IL; Bluffton, Muncie, Logansport, IN; St. Johns, Quincy, Delphos, Lima, Bucyrus, OH, & more.

**#179 VARIOUS RAILROADS OF THE MIDWEST (OH, IN, MO, KS) VOL. 21:** (Filmed by R. Kuhn), take a trip to Lawson, Grandview, MO; KS City, KS; Muncie, Otterbein, IN; Marion, OH, etc., & see CSX, KCS, UP, BNSF, AMT, UP, NS, CSX Circus, KBSR, Triple Crown, etc.

**S#180 VARIOUS RAILROADS OF THE MIDWEST (OH, IN, MI) VOL. 22:** (Filmed by R. Kuhn), various CSX, NS, M&W, OC, Circus, N&W 611 & NKP 587 Steam, CR, GT, AMT, at- Williamsburg, Muncie, Richmond, IN; St. Johns, Coshoccon, Sugar Creek, OH; Durand, MI, etc.

**S#181 VARIOUS RAILROADS OF THE MIDWEST (MO, IL, IN, OH) VOL. 23:** (Filmed by R. Kuhn), see NS, SOO/CP, GWRY, ATSF, BN, KCS, M&NA, EIRR, CR, GT/CN, N&W 611 Steam, etc. at Ft. Wayne, IN; Pleasant Hill, Roodhouse, IL; Louisiana, MO; Deshler, OH, etc.

**#182 NORFOLK SOUTHERN & CN, CP SOUTH BEND, IN 2012:** Freights, modern EMDs & GE's, BNSF, BCR, UP units, SD75is, C40-8MUs, more, 3/12.

**#183 CSX, NS, RJ CORMAN- IN INDIANA & OHIO 2012:** See various freights, windmill train, NS President Train with F units, NS Muncie East Yards, Progress Rail new EMD units, GP16s, etc., at places like Muncie & Selma, IN, & Ft. Recovery & Coldwater, OH, 4/12.

**#184 PRR & NYC CO. FILMS VINTAGE:** Films from the 1940s & 50, B&W: PRR Series- Progress On Rails, Wheels Of Steel, Opening A New Frontier, Clear Tracks Ahead, NYC Series- The Steam Loco., The Freight Yard, The Railroad Signal.

**S#185 NKP STEAM ACTION AT IN TRANSPORTATION MUSEUM:** NKP 587 steam & MON FP7 at IN Transp. Museum, roley, ATSF coaches, static displays.

**S#186 GRAND RAPIDS & INDIANA/PRR LINE COVERAGE:** Slide presentation of GR&I by J. Winslow -Richmond, IN to Mackinaw City, MI, & of Decatur, Ft. Wayne, & Rome City, IN, & Kalamazoo, Grand Rapids, & Petoskey, MI, 1995. Tracks, depots, & bridges in IN towns- 1988, 89, 95.

**S#187 VARIOUS STEAM COVERAGE:** (Filmed by L. Lett) Hesston Museum steam, fests, displays, NKP 765, Little River 1, OR Lumber 7, etc., MI areas, '09, '11.

**S#188 STEAM EXCURSION RAILROADS:** (L. Lett), steam-Durango & Silverton, Georgetown Loop, Steamtown, Strasburg RR, Little River, Great Lakes, '98-'05.

**C#189 DIESEL EXCURSION RAILROADS:** (Filmed by L. Lett), See a variety of diesel locos in action & on display at- IN Transp. Museum, IL RY Museum, TLE&W, some cab rides such as on Lake Central & CK&S RRs, live steam with diesels, & more, 1999-2005.



**C#190 CAB RIDES OF EXCURSION RRs:** (Filmed by L. Lett), Take a few cab rides on such RRs as- Whitewater Valley, Monticello RY Museum, Lima engine, MLW FPA/B, 44-Tonner, in various IN locations, & more, 2009 & 2010.

**#191 STREETCARS, SUBWAYS, TROLLEYS:** (Filmed by L. Lett), Coverage of Toronto Transit Comm., Helton Country Radial Museum, Trolley Ville, USA, OH RY Museum, Shaker Heights LRVs, Rapid Transit, park train rides, & more, in IN, OH, & Canada, 1995-1997.

**#192 RAILROADS IN OHIO & INDIANA SPOTS:** (L. Lett), freights of NS, CP, PRR E8s, Indiana Northeastern, & more at various IN & OH spots, '94-'11.

**C# 193 VARIOUS RAILROADS OF OHIO & INDIANA VOL.16:** (Filmed by R. Kuhn), We see a variety of CSX, CN, RJ CORMAN, CFE, NS, at locations such as Wellsboro, IN; & Spencerville, Coldwater, Lima, Celina, OH, & more. Cab ride on a switch at Spencerville. 2012.

**#194 CSX, NS, CP IN INDIANA 2012:** (R. Kuhn), Elkhart & Garrett, IN locals, mainline freights, switching, & more. NYC Museum, Garrett Model RR, 2012.

**#195 KANSAS CITY-SANTA FE JUNCTION BNSF, UP, NS, KCS 2012:** (R. Kuhn) coal, auto, mix, GP30s, ACs, KS & MO, run-thru power, & more, 2012.

**#196 VARIOUS RAILROADS OF OHIO & MO (BNSF, KCS, NS, CSX, UP) 2012:** (Filmed by R. Kuhn), See freights of these roads in locations like Independence, Neosha, Asbury, Joudon, MO; & New Lexington, W. Rushville, Duval, OH, & more, 2012.

**S#197 ATTICA JUNCTION, OH ACTION- NS, CSX (NKP 765 & HRTG.) 2012:** Catch some action at this busy point, with modern units & a variety of freights with NKP 765 steam & NKP heritage unit 8100 ES44AC. Back at Ft. Wayne, IN see the NKP locos again, 2012.

**S#198 NS E. CENTRAL IN 2012:** At Ft. Wayne, New Haven, E. Wayne Yds in IN, NKP 765 steam & NKP 8100 GE preparing for Bellevue, OH, 7 & 8/12.

**#199 CSX & NS DOUBLE-DOUBLE DIAMONDS 2012 MARION, OH:** busy location, ex-EL, NYC/PC/CR, PRR/N&W, & C&O- now NS & CSX, 7 & 8/12.

**S#200 CSX & NS EAST CENTRAL INDIANA 2012 VOL. 1:** Muncie, New Haven, IN CSX & NS, NKP 765 steam, NKP hertg. return Bellevue, OH trip, 8 & 9/12.

**#201 CSX & NS EAST CENTRAL INDIANA 2012 V. 2:** (Filmed B. Jettmore), Feights Muncie, Albany, Redkey, IN, Triple Crown, UP & BNSF units, 10, 12/12.

**#201 CSX & NS EAST CENTRAL INDIANA 2012 V. 2:** (B. Jettmore) at Muncie, Albany, Redkey, IN, etc. Action with Triple Crown, UP, BNSF units, etc., 10 & 12/12.

**#202 CSX & NS EAST CENTRAL INDIANA 2012 VOL. 3:** (Film B. Jettmore), Var. freights Muncie, KCS, BNSF run-thru pwr., TOFC, Triple Crown, etc. 12/12.

**#203 VARIOUS RAILROADS OF OH & IN 2013 VOL. 1:** (R. Kuhn), Waterloo, IN trains NS, AMT, CP, SOU Hert., Bucyrus, OH-NS, PRR Hert. unit, 8 & 9/13.

**#204 CSX & NS HAMILTON, OH 2014:** (Filmed by Kuhn & Lehman), see many various types of freights at this busy location of the ex-B&O & PRR, 8 & 9/14.

**S#205 CSX & NS IN INDIANA (& C&O STEAM) 2006/'13-'14:** (R. Kuhn & K.L.) freights at Lafayette, Peru, Clymers, NKP 765 steam, C&O Hrtg. Museum disp.

**S#206 VARIOUS RAILROADS OF AL (CSX, AMT, NS) 2014 VOL. 1:** Birmingham & Talladega, CSX's SE Chicago, IL-Tampa, FL, Frisco steam display, 2/14.

**#207 VARIOUS RAILROADS OF INDIANA & ALABAMA (CSX, AMT, NS) 2014:** More Talladega & Alpine, AL, & Muncie, IN- CSX & NS freights, 2/14

**#208 WINDMILL TRAINS IN INDIANA 2014:** 3 windmill trains-CSX & Connersville & New Castle RR, Connersville, of train, truck, & finished sites, 6 -10/14.

**#209 CSX & NS FOSTORIA, OH 2014:** Freights on ex-B&O, C&O, NKP/N&W- now CSX & NS- from Iron Triangle Park. Coal, stacks, TOFC, mix, etc., 9/14.

**#210 CSX & NS OHIO HOTSPOTS 2014:** Hamilton & Fostoria, OH freights of diff. types, new EMDs & GEs, Triple Crown, locals, coal, mix, etc., 9/2014.

**•RAILROAD AUDIO CD PRODUCTS -MODERN & VINTAGE- PRODUCED BY 1-WEST PRODUCTIONS™:** (CD-R Audio Stereo, Mono, &/or Hi-Fidelity, min. 128 Kbps Quality, Audio Tape to Digital Audio, Various Approx. Mins., Track Descrips., owned & © Copyright 2015-23 1-West Productions™/P.J.)

**ALL AUDIO CDs are \$12 EA or 2 for \$20:**

**-NEW-MODERN RAILROAD SOUNDS WITH NORFOLK SOUTHERN (2010s+) (NEW 4/2020) AUDIO TRAIN RECORDINGS:** trackside, distant, & background NS freight train sounds, with idling locos, 2018-'20, Clyde, OH area. Mono, Stereo, Hi-Fidelity. 1 hr 11 mins. dig. AUDIO to dig. AUDIO CD format.

**-NORFOLK SOUTHERN-N&W 1980s, VOL. 1 AUDIO TRAIN RECORDINGS:** NEW 5/20-Start of AUDIO Series, early trackside NS-N&W action Bellevue, OH area, audio tape to dig. AUDIO CD format, 18 Mins., Mono (Note-there may be some distorted sounds in some areas due to equip, used at the time).

**-NS-N&W 1980s, VOL. 2 AUDIO:** NEW 5/20-NS-N&W trains, Bellv., OH area, audio tape to dig. AUDIO CD, 49 Mins., Mono (may have some dist. audio in areas.)

**-NEW-NORFOLKSOUTHERN-N&W 1980s, VOL. 3 AUDIO TRAIN RECORDINGS:** NEW 5/20-Early NS action with many freights, Bellevue, OH area, audio tape to dig. AUDIO CD format, 31 Mins., Mono (Note-there may be some distorted sounds in some areas due to equip, used at the time.)

**-NEW-NORFOLK SOUTHERN-N&W 1980s, VOL. 4 AUDIO TRAIN RECORDINGS:** NEW 5/20-N&W SD9, NS freights-UP, NW, SOU, NS units, trackside, Bellevue, OH, & TLE&W- Grand Rapids, OH. Audio tape to dig. AUDIO CD format, 55 Mins., Mono (note-may be distorted sounds in areas due to older equip.).

**---NEW-NORFOLK SOUTHERN-N&W 1980s, VOL. 5 AUDIO TRAIN RECORDINGS:** NEW 4/20-More early audio trackside NS audio around the Bellevue & Flat Rock, OH area, older & newer locos, some J611 steam, Summer 1986, audio tape to dig. CD audio, Mono-Hi-Fidelity & Stereo, Approx. 38 Mins

**-NEW-NORFOLK SOUTHERN-N&W 1980s, VOL. 6 AUDIO TRAIN RECORDINGS:** NEW 4/20-Early NS audio sounds, trackside, GEs, EMDs, SD9s, (L.Cloud engineer switching), Bellevue, OH, Summer 1986, audio tape to dig. Audio CD, Panning Stereo/Stereo, & Hi-Fidelity, Approx. 44 Mins.

**-NEW-NORFOLK SOUTHERN-N&W 1980s, VOL. 7 AUDIO TRAIN RECORDINGS:** NEW 4/20-More audio of early trackside NS audio action, Clyde & Bellevue, OH, 1/87, loco, thru freights, older & newer locos, audio tape to dig. Audio CD, Panning Stereo/Stereo-Hi-Fidelity, Approx. 43 Mins

**-NEW-NORFOLK SOUTHERN-N&W 1980s, VOL. 8 AUDIO TRAIN RECORDINGS:** NEW-4/20-Geat vintage audio trackside NS audio at Flat Rock & Bellevue, OH, 1 & 2/87. GEs, EMDs, more SD9s, audio tape to dig. Audio CD, Stereo & Hi-Fidelity, Approx. 52 Mins..

**-NEW-NORFOLK SOUTHERN-N&W 1980s, VOL. 9 AUDIO TRAIN RECORDINGS:** NEW-4/20-Early NS audio, trackside Clyde & Bellevue, OH, 2/87, GEs, EMDs, trackside freights, audio tape to dig. Audio CD, Mono, Hi-Fidelity, & Stereo, 1 Hr. 8 Mins.

**-NEW-NORFOLK SOUTHERN-N&W 1980s, VOL. 10 AUDIO TRAIN RECORDINGS:** NEW-4/20-Lots of vintage audio trackside NS action, Bellevue, OH, trackside with older & newer EMDs & GEs, 2/87, Mono-Hi-Fidelity & Stereo, Approx. 47 Mins.

**-NORFOLK SOUTHERN-N&W 1980s, VOL. 11 AUDIO TRAIN RECORDINGS:** (New 2015) Early NS railroad audio, in Panning Stereo/Stereo. Hear older locomotive GE & EMD sounds, freight cars, classic horns, jointed rail, audio tape to dig. audio CD for your listening imagination, Approx. 45 Mins., 2 & 3/87.

**-NORFOLK SOUTHERN-N&W 1980s, VOL. 12 AUDIO TRAIN RECORDINGS:** (New 2015) More early NS railroad sounds, in true Panning Stereo/Stereo. Hear standard cab GE & EMD locos, freight cars, classic horns, & more- Bellevue, OH areas, audio tape to dig. audio CD, Approx. 80 Mins., 3/87.

**-NEW-RAILROAD SCANNER RADIO-CONRAIL/CSX-CHESSIE & NS-N&W, 1987-88 AUDIO, V.1:** (New 5/20) Radio talk NW/N-C OH area Toledo, Tiffin, Bellevue Yd., Clyde, Flat Rock, Sandusky, etc., CSX's Willard Sub., NS's Scioto, Toledo, Sandusky Dists, CR's Chicago Line, dispatchers, etc. '87-'88, 41 Mins.

**-NEW-RAILROAD SCANNER RADIO-NS-N&W, 1988 AUDIO, VOL. 2:** (New 5/20) Hear NS-N&W radio talk in NW/N-C OH area of Bellevue Yard, Clyde, Fremont, Sandusky areas, w/ NS's Scioto, Toledo, Sandusky Districts, dispatchers, crews, detectors, and more from '88, apprx. 1 Hr. 8 Mins.

**-NEW-RAILROAD SCANNER RADIO-CONRAIL & NS-N&W, 1988 AUDIO, VOL. 3:** (New 5/20) CR & NS-N&W radio talk NW/N-C OH area '88, detectors, CR's Chicago Line, RR talk around Toledo, Sandusky, Bellevue Yd., Clyde, Fremont, w/ NS's Scioto, Toledo, Sandusky Districts, dispatchers, crews, etc. 1 Hr. 5 Mins.

**-NEW-RAILROAD SCANNER RADIO-CSX-CHESSIE, 1987/88 AUDIO, VOL. 4:** (New 5/20) Vintage CSX-Chessie radio talk in N-C OH area, w/ CSX's Willard Subdivision, Willard Yd., Tiffin, Fostoria, Attica Jct., Sciopo, detectors, dispatchers, trainmasters, crew, etc., '87/'88, 45 Mins.

**Order Form on next page**

**Still the same prices since 2014!**

**ORDER FORM** (Updated 9/2023- please use this updated Order Form & Catalog with your order & payment):

**-FREE SHIPPING Media Mail DVD/Audio CD orders** (lower US States. Priority Mail + \$7 per order, + \$1.50 ea. addl. item. Canadian orders +\$22 per order, Intl. orders + \$35 per order). **-Payments Accepted:** credit/debit cards (or pay safely by PayPal's Secure site to our email for PayPal payments: [1westproductions@gmail.com](mailto:1westproductions@gmail.com) or on our website), personal checks, money orders, bank cashier's checks (note- check clear. period approx. 5 days, \$35 non-refundable fee for returned/insufficient checks. Please provide phone # when sending a check. **-Your Privacy is protected-** we don't sell or give out your name, address, number, etc. **-100% Guarantee-** we replace defective products with same title (please 1st check DVD/CD in different players. Defective product may be required to be returned prior). **We appreciate your continued business!** Sign up for our **FREE Email Newsletter, & Catalog.**

**1WP™ 1-WEST PRODUCTIONS™ RAILROAD VIDEO & AUDIO**

7+ Years in Business

**-WEBSTORE:** [WWW.1WESTPRODUCTIONS.COM](http://WWW.1WESTPRODUCTIONS.COM) **-EMAIL:** [1westproductions@gmail.com](mailto:1westproductions@gmail.com) / **PO Box 355, Clyde, OH 43410 / 567.280.0052**  
(If you get our voice mail, please state you are a video/audio customer, & we'll get right back to you.) **FREE Shipping- Media Mail, lower US States)**  
**\*All RR Video DVDs: \$20 EA / 2 for \$35 / 3 for \$53 / 4 for \$70; All RR Audio CDs: \$12 EA / 2 for \$20 / 4 for \$40**

QUANTITY	DVD/CD/BOOK TITLE & ITEM NUMBER (if shown)	PRICE

Name	Subtotal	
Address	OHIO Residents Add 7.25% Sales Tax (.0725 x Subtotal):	
City	State	Shipping
Phone No.	TOTAL	

Or you may place your order on our Website: [WWW.1WESTPRODUCTIONS.COM](http://WWW.1WESTPRODUCTIONS.COM), & pay by Credit/Debit card, etc., using Paypal (no extra fee to use Paypal).



# IWP™ 1-WEST PRODUCTIONS™ RAILROAD VIDEO & AUDIO CATALOG 2023

